



XT24 Loader Arm Extensions



Specific to 2-3 Yard Loaders

MODEL NUMBER: _____

SERIAL NUMBER: _____

Rev. 10/13

Rylind Manufacturing, Inc.
2801 Youngfield St
Suite 250
Golden, CO 80401

Main Offices: 303-979-3548
Manufacturing Plant: 970-522-2859
www.Rylind.com
Info@rylind.com

- Thank you for purchasing a Rybind Attachment. For proper installation and operation for your Rybind Attachment this book **SHOULD BE READ COMPLETELY BEFORE BEGINNING INSTALLATION OR OPERATION OF THE EQUIPMENT.**
- Your safety and the safety of others depend on the proper installation, operation, maintenance, and understanding in the use of this equipment.
- Some photographs and installations in this manual may show details of this attachment that may be slightly different from your unit.
- Continuing improvements and advancements of this product may occur at any time.
- Any unauthorized modification to this product or lack of maintenance, proper use, or unsafe operating techniques will not be covered under warranty, further more Rybind Manufacturing reserves the right to void the warranty on some or all the equipment installed on that unit.
- If any questions arise during installation or maintenance of your product please consult your dealer or contact Rybind Manufacturing's corporate offices.

Thank you for your business.

Rylind Loader Arm Extensions

WARNING: Welding on any machine carries inherent risks. Rylind will not be held responsible for any issues/problems that arise during use or installation of loader arm extensions. Rylind recommends unplugging or tripping the main computer breakers when welding loader arm extensions, as well as grounding the machine as close to your welding area as possible. Welding should be done by a certified welder. Re-inspecting of welds is recommended after 50 hours of operation.

Loader Arm extensions reduce the manufacture's tipping load by approximately 40%. Full counter weight is recommended. Gradual filling and full height dumping is recommended to determine the stability of your machine.

Loader Arm Extensions are primarily used in light material around 1,800 lbs. per cubic yard. Heavier material is not recommended. Loader Arm extensions are easily removed when going back to heavier applications. DO NOT use loader arm extensions with a coupler.

Install

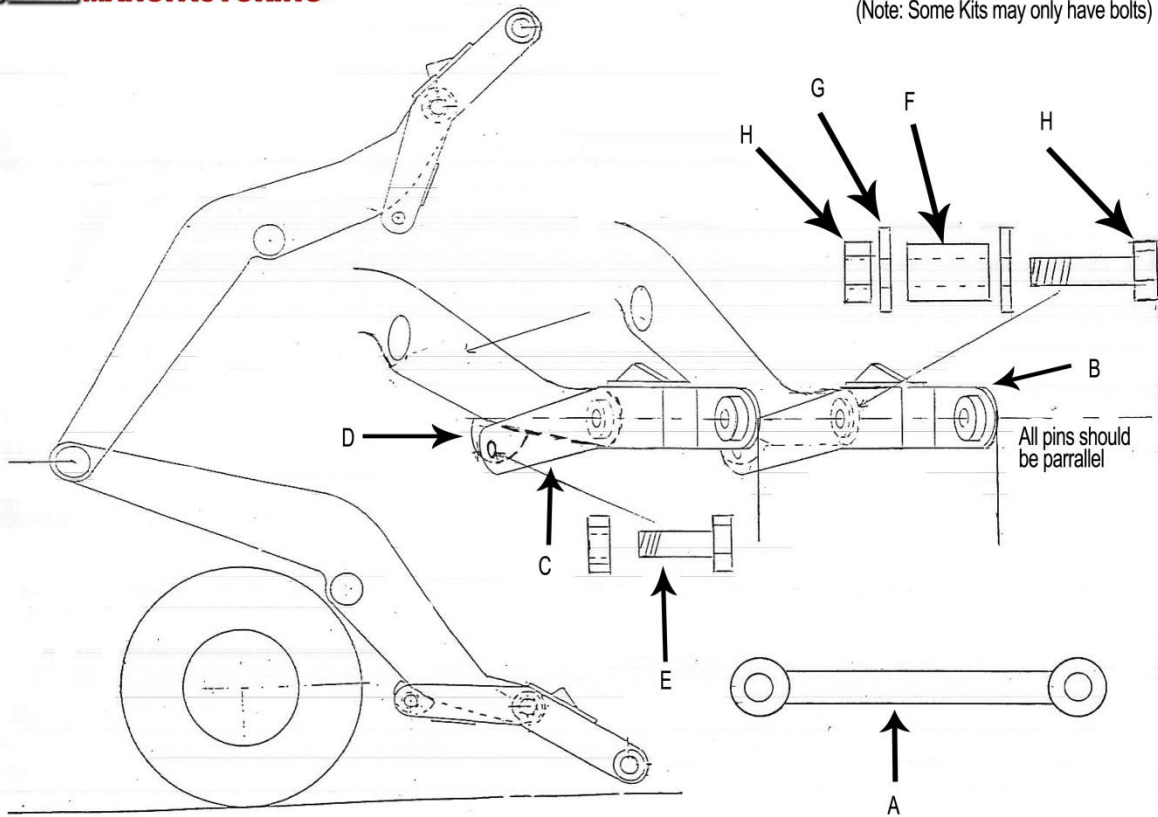
1. Unpin and remove stock bucket
2. Remove OEM Z-Bar Linkage or "Dog Bone"
3. Ground Machine and Trip or Unplug Machines Main Computer
4. Slide the Right and Left Arm Extensions replacing the stock OEM Bucket pin with Provided Replacement Bushings, Washer and Pin. (See Drawing)
5. Slide the Loader Arm Bracket Pin through the back of the arm extensions and the weld on lower arm pin boss. Tighten till movement is stiff but still possible.
6. Swing the back of Loader Arm Extension up to where the weld-on boss meets the machines loader arms. Check that extensions, boom pins, and loader arm boom pins are parallel and properly spaced. Slight shimming or grinding on weld-on pin boss may be necessary. (If off by more than 1/8" please call Rylind MFG to determine whether to shim or grind.)
7. Substantially tack weld Lower Arm Bracket to Machine Loader Arms.
8. Tighten all four (4) loader arm pins and bolts, checks again for correct spacing and that all pins are parallel.
9. Install Dog Bone Extension using your OEM Pins.
10. Pin Stock Bucket onto Loader Arm Extensions using your OEM Loader Pins.

11. Slowly roll bucket back and forth at full dump height and ground level, checking roll back stops and dump stops to make sure bucket operates correctly and does not dump past the OEM specified angle.
 - a. Shims can be welded on to extensions if bucket rolls back or dumps too far.
12. Completely weld the weld-on pin bosses, clean welds, and paint. (If it is necessary to remove rear pin and swing extensions out of the way to weld, cross brace pin bosses to maintain alignment during welding.)



Rylind Loader Arm Extensions ^{10/96}

(Note: Some Kits may only have bolts)





Parts

Required	Label	Part #	Description
1	A	XT-DB	Dog Bone Extension (OEM Specific)
1	B	XT-LA	Left Hand Arm Extension (OEM Specific)
1	C	XT-RA	Right Hand Arm Extension (OEM Specific)
2	D	XT-101	Weld-on Lower Arm Pin Boss
2	E	XT-102	Weld-on Bracket Pin and Bolt
2	F	XT-103	Loader Arm Pin Bushing (OEM Specific)
4	G	XT-104	Loader Arm Washer
2	H	XT-105	Loader Arm Pin & Bolt
		OEM	OEM Loader Pin Seals
		OEM	OEM Loader Pin Bushings

Maintenance

- Loader Arm Extensions should be routinely checked for stress and fatigue before every operation.
- Rylind pins and bushings should be removed and inspected twice a year for stress or fatigue.
- If fatigue is showing immediately discontinue use of loader arm extensions and call Rylind for either replacement parts or information on repairing.



Business Offices Only
2801 Youngfield St
Suite 250
Golden, CO 80401

P) 303-979-3548
F) 303-979-4730
www.Rylind.com
Info@rylind.com

LIMITED WARRANTY

Rylind Manufacturing Inc. is a company related to and having the responsibility for the manufacturing, marketing, and distribution of the product line known by the registered trade name "Rylind"

Rylind Manufacturing, Inc. warrants these products to be free of defects in material and/or workmanship for a period of one (1) year or 2,000 hours from the date of purchase under normal use and service providing that:

- A. All products and related components are installed properly according to instructions and that proper maintenance and greasing of movable parts is completed on a regular basis.
- B. The attachment products and related components are used only for the purpose for which they were intended as designated by the manufacturer and that the rated capacities are not exceeded.
- C. This is a "PARTS ONLY" warranty for defects in hydraulic components not typical maintenance parts (i.e. seal kits, hydraulic hoses, cylinders, or vendor supplied valves). This means the hydraulic part will be replaced freight prepaid from the factory. Travel time or labor to replace the defective component is "NOT" included in this warranty. Return of the defective parts for inspection may be requested.
- D. Hydraulic kits and components are warranted for one (1) year from invoice date. Cylinders must be returned in their entirety and not have been disassembled to be considered for warranty. After warranty replacement parts include cylinders, hydraulic valves, seal kits, electric components, and wear parts are warranted for 90 days from the date of purchase. Disassembly, modification or welding of any kind without the written permission of Rylind Manufacturing voids the warranty on the cylinder and seals. All warranty components must be packaged and sealed to avoid contaminants from entering during shipping. Improperly packaged components will not be considered for warranty. Hydraulic hoses are warranted against failure due to workmanship. Improper installation, ripping, cutting, or wear due to rubbing is not covered under warranty.
- E. Defects in materials and/or workmanship with respect to welding or structural failures will be paid at a rate not to exceed 70% of the advertised charge out rate. Repairs must be authorized by Rylind before work proceeds. Travel time or mileage is "NOT" included. All warranty work to be performed must be authorized by Rylind Manufacturing, Inc. Repair or replacement will be at our discretion. Estimates of the total costs involved must be given to us before proceeding with any work involving a Rylind product. No warranty will apply to products that have been modified or repaired without our authorization. Normal wear and tear will not be considered as a defect. Accidents, misuse or negligence does not justify warranty. This warranty does not include or cover purchased subassemblies including, but not limited to, teeth, fork tines,

cylinders, wear plates, edges, etc... Such purchased subassemblies are covered only by the OEM's warranty, if any, of their respective manufacturer, and not Rybind Manufacturing.

F. Limitations

- a. This limited warranty does not cover product, which in the opinion of Rybind, is damaged due to abuse, misuse, misapplication, prohibited operation, improper maintenance, alteration, unauthorized service, contamination by the base machine, or normal wear and tear. This warranty is null and void if the product is modified in any way without the written consent or instruction of Rybind.
 - b. This limited warranty is null and void if the product is used in a prohibited operation, or unauthorized adjustment/assembly/disassembly has occurred.
 - c. Dealers or Agents of Rybind have no authority to make any type of representation or warranties on behalf of Rybind Manufacturing beyond those expressly set forth in this document.
 - d. This warranty is in lieu of and excluding all other warranties preceding it including and without limitation to any implied warranties of merchantability or fitness for a particular purpose.
- G. In no event shall Rybind be liable to any party, including but not limited to buyer for any direct, incidental, consequential, punitive, or special damages, including but not limited to loss of profits, loss of productivity, in any way related to or arising, directly or indirectly from the product. The liability of Rybind for any and all losses and damage to buyer, its successors and assigns, resulting from any cause whatsoever, including the negligence of Rybind, irrespective of whether such defects are discoverable or latent, shall in no event exceed the purchase price of the product with respect to which such losses or damages are claimed.
- H. All returned products must be shipped to the following address to avoid any delay or expense in the warranty process:

Rybind Manufacturing, Inc.
Warranty/Service Department
16178 Front Ave
Atwood, CO 80722