



Wedge-loc Coupler Installation Manual Pin-loc Coupler Installation Manual



Coupler Models

SLH1042W, SLH10M, SLH1022H
LH2042W, LH3042W, LH4042W, LH5062W, LH6062W
LH20M, LH30M, LH40M
LH2022H, LH3022H, LH4022H, LH5044H
LH20938H, LH30938H, LH40950H, LH50966H
IT1022H, IT2022H, IT3022H
VM2022H, VM3022H, VM4022H
LH20416H, LH30416H, LH40418H, LH50420H

Model Number _____

Serial Number: _____

Rev. 08/15

Rylind Manufacturing, Inc.
2801 Youngfield Street
Suite 250
Golden, CO 80401-2263

Offices: 303-979-3548
Fax: 303-979-4730
www.Rylind.com
Info@rylind.com

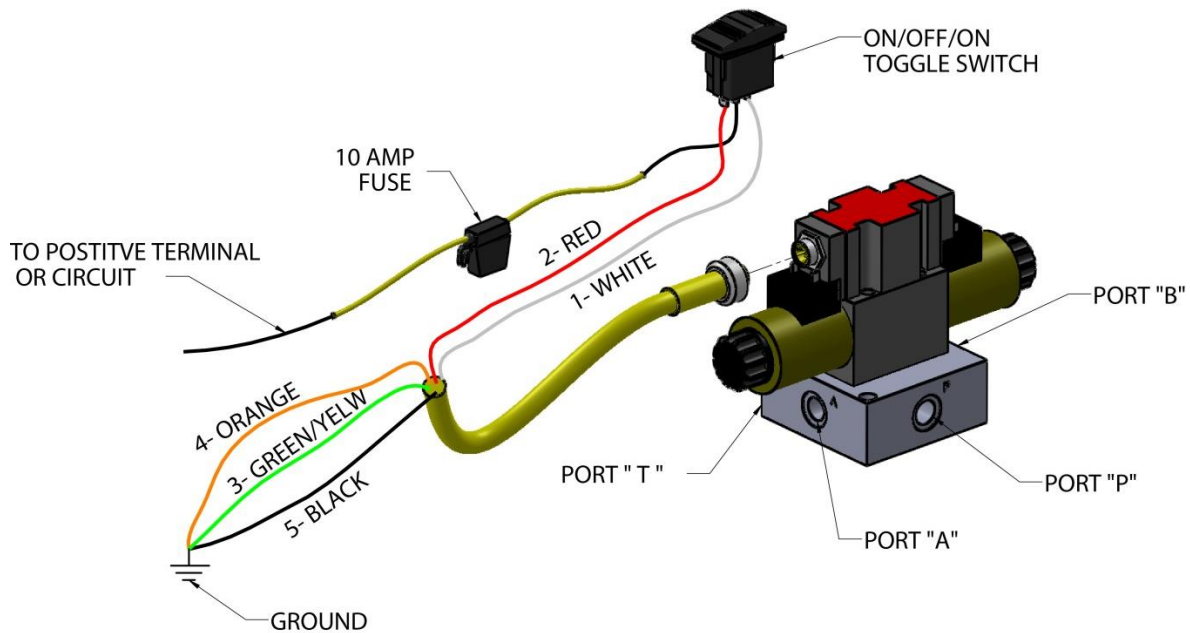
- Thank you for purchasing a Rybind Attachment. For proper installation and operation for your Rybind Attachment this book **SHOULD BE READ COMPLETELY BEFORE BEGINNING INSTALLATION OR OPERATION OF THE EQUIPMENT.**
- Your safety and the safety of others depend on the proper installation, operation, maintenance, and understanding in the use of this equipment.
- Some photographs and installations in this manual may show details of this attachment that may be different from your unit.
- Continuing improvements and advancements of this product may occur at any time.
- Unauthorized modification to this product or lack of maintenance, proper use, or unsafe operating techniques; Rybind Manufacturing may reserve the right to void the warranty on some or all the equipment installed on that unit.
- If any questions arise during installation or maintenance of your product please consult your dealer or contact Rybind Manufacturing's corporate offices.

Table of Contents

VALVE INSTALLATION INSTRUCTIONS.....	4
START UP OPERATION & MAINTENANCE	7
Packing List.....	8
Wedge-loc Coupler Parts List	9
Rylind Pin-loc Coupler Parts List	10
CAT 950-966 Style Couplers Parts List	10
CAT “IT” Style Parts List.....	11
Balderson, CAT 938 Style Parts List.....	12
Volvo ISO & Deere Hi-Vis Coupler Parts List	13
JRB 416 Coupler Parts List.....	14
LIMITED WARRANTY	15

VALVE INSTALLATION INSTRUCTIONS

Wire Diagram



1. Mount the provided valve using the bracket in the most convenient location for hydraulic lines and maintenance duties.



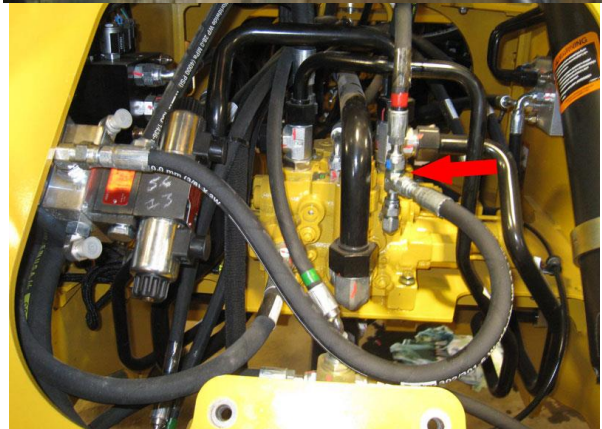
2. Run hoses from the coupler along the lift arms and down to valve using 1/4" blots and clips provided.

*Hydraulic lines from coupler to valve body not provided



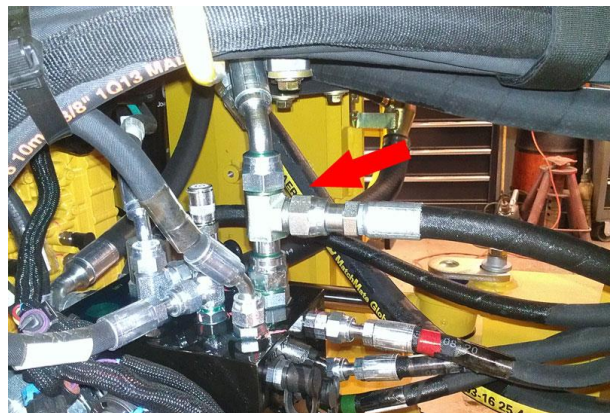
3. Plumb pressure hose from port "P" with the provided hydraulic line to the rollback port of the main valve or in-line with the rollback hose.

*T-Fitting not provided

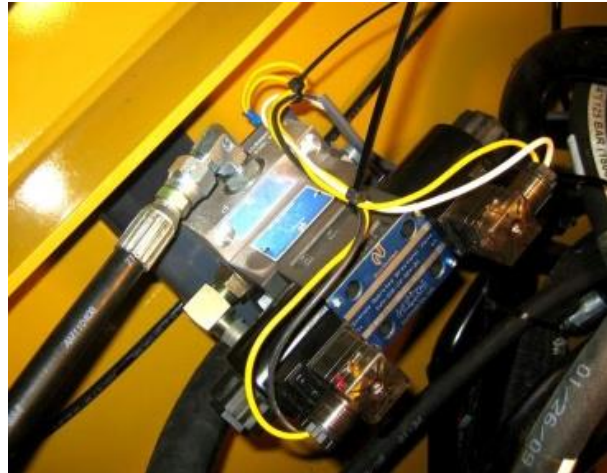


4. Run the provided return hose from port "T" on the valve to a convenient return source. (Return line, valve, tank, etc...)

*T-Fitting not provided



5. Install Wire Harness and Momentary On/Off/On toggle switch in empty bay in the cab of loader and install wires to valve. (Cutting maybe necessary if no open bays are available)



6. If there are still questions on installation contact Rybind Manufacturing for additional information or pictures if needed.
 - a. Other pressure sources can be used with this system provided that the minimum pressure is 300-600 PSI or more for Horizontal Pin-loc Couplers and 1800-2000 PSI or more for Wedge-loc Couplers. Other sources may include third function valves or possible 3rd party hydraulics already installed in the Loader. Wedge-loc couplers require a valve that can lock the 1800-2000PSI in the cylinders during operation to assure a strong hold while operating the machine.

Hydraulic Coupler Locking System

In order to lock or unlock the quick coupler system, rotate the coupler back against the stops. Then move the momentary switch in the direction desired to lock or unlock the coupler. At the same time, continue to move the tilt circuit lever back to actuate the locking system in the direction required.

Rybind Manufacturing, Inc.
(303) 979-3548

START UP OPERATION & MAINTENANCE

1. Check all fittings for tightness before starting loader. Start loader and check all hydraulic lines and fittings for leaks. Operate the cylinders on the coupler several times to remove any air bubbles and double check for leaks. (After the attachment is installed on the coupler and if the Wedges or Pins seem loose or are not seated fully, bleeding the hydraulic lines may be necessary.)
2. Locking Coupler:
 - a. Lower coupler and tilt forward to be able to engage the attachment. Center coupler between hooks on the attachment. Slowly drive forward and lift coupler until attachment starts to raise, roll coupler back until the attachment fully engages the coupler. Roll coupler back to assure attachment won't fall off.
3. Unlocking Coupler:
 - a. Raise coupler off ground where you can see either the locking wedges or horizontal slide pins. Roll coupler back against stops move toggle switch to unlock until both wedges are all the way up or pins are completely retracted.
4. **(Note: if both wedges or pins do not fully engage detach and clean wedges, pins, or hooks of all debris)** Shake attachment slightly, if it is still loose after cleaning have a certified maintenance person check the lock valve system, it may need cleaning or replacement.
5. Periodically check Wedges or Pins for wear and to insure full engagement.
6. Periodic cleaning, lubrication and maintenance will insure safe and long lasting use of our coupler systems. Rylind recommends using Loctite C5-A Copper Based Anti-Seize Lubricant on all moving parts. Available through Rylind if needed.
7. Your safety and the safety of others depend upon the care and judgment in the operation of this equipment.

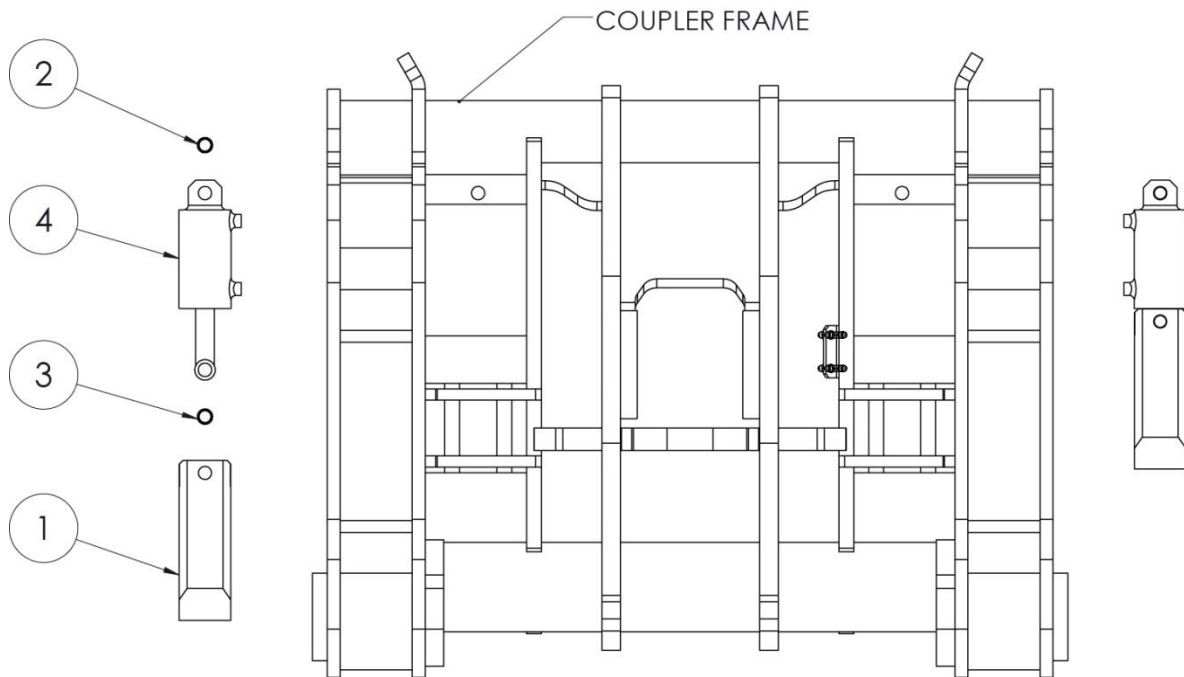
Packing List

Quantity	Part Number	Description
1	RMI-12V W/Lock RMI-12V WO/Lock RMI-24V W/Lock RMI-24V WO/Lock (Loader Specific)	4-Way Electric/Hydraulic Coupler Valve with wire harness
1	LH-BRCK	Valve Mounting Bracket
2	9002626460	1/4X2 Mounting Bolt
2	3502400021	1/4 Lock Washer
2	2062400021	1/4-20 Nut
1	18439	Momentary On/Off/On Switch
1	782-2023	10 amp Fuse Holder
2	0507-8-6	Hydraulic Fitting
2	511-921HC	3/8" to 1/4" Pipe Bushings
2	21342-4-4	1/4" Reusable Hydraulic Hose Fitting
7	502512021	1/4" x 1" High Tensile Zinc Bolt
7	3502400021	1/4 Lock Washer
7	2062400021	1/4-20 Nut
14	W25108	1/2" Hose Clips
10	W21996	Cable Ties
2	422-4RL 10643-6-4	1/4" 1-Wire hose, 23ft long, one end crimped w/4-6FJX fitting.
1		Yellow Coupler Information Sticker
1		Installation Manual
Additional Components for a Pin-loc Coupler		
1	6-S5OX-S	T-Fitting
2	6-C5OX-S	Right Angle Fitting
1		1/4" 1-Wire Hose, 7ft Long one end crimped w/10643-6-4 fitting.

Signature_____

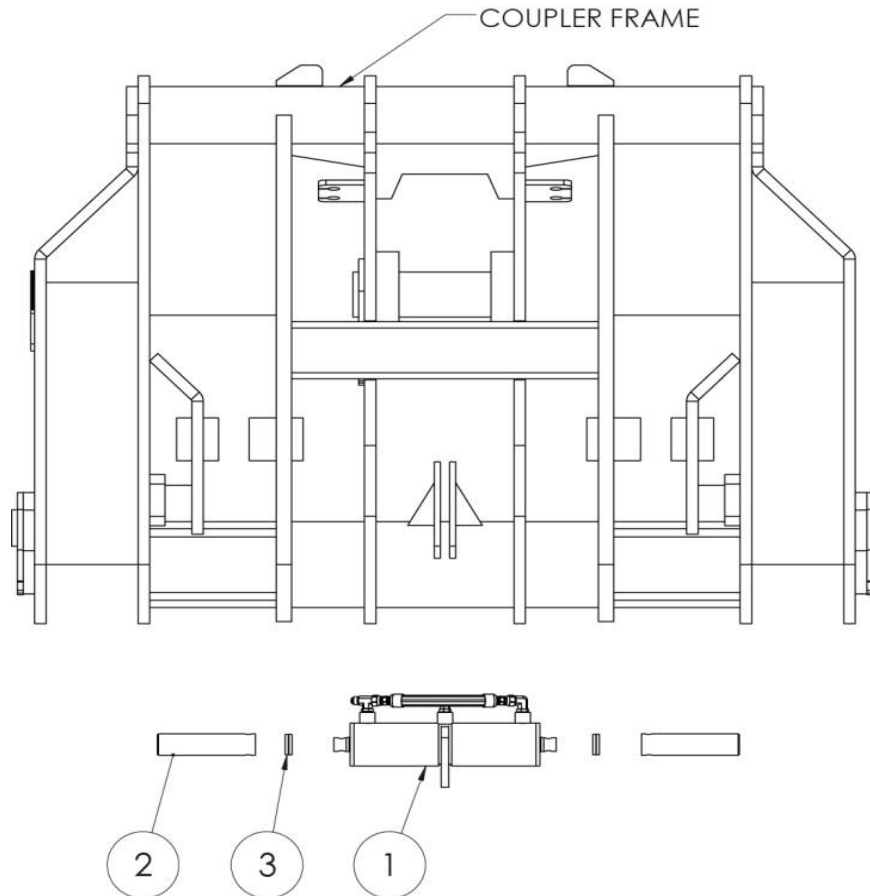
Wedge-loc Coupler Parts List

#	# Required	Part Number	Description
20 - 40 Series Wedge-loc Couplers			
1	2	18230	Wedge-loc Locking Wedge
2	1	18234	Cylinder Retention Pin
3	1	18234	Wedge Retention Pin
4	2	18250	Wedge-loc Cylinder
4	2	18256	Wedge-loc Cylinder Seal Kit
-	2	18235	Wedge-loc Attachment Pocket
50 & 60 Series Wedge-loc Couplers			
1	2	18231	50-60 Series Locking Wedge
2	1	18237	Cylinder Retention Pin
3	1	18238	Wedge Retention Pin
4	2	18250-3	Wedge-loc Cylinder
4	2	18257	Wedge-loc Cylinder Seal Kit
-	2	18235-3	50-60 Series Wedge-loc Attachment Pocket



Rylind Pin-loc Coupler Parts List

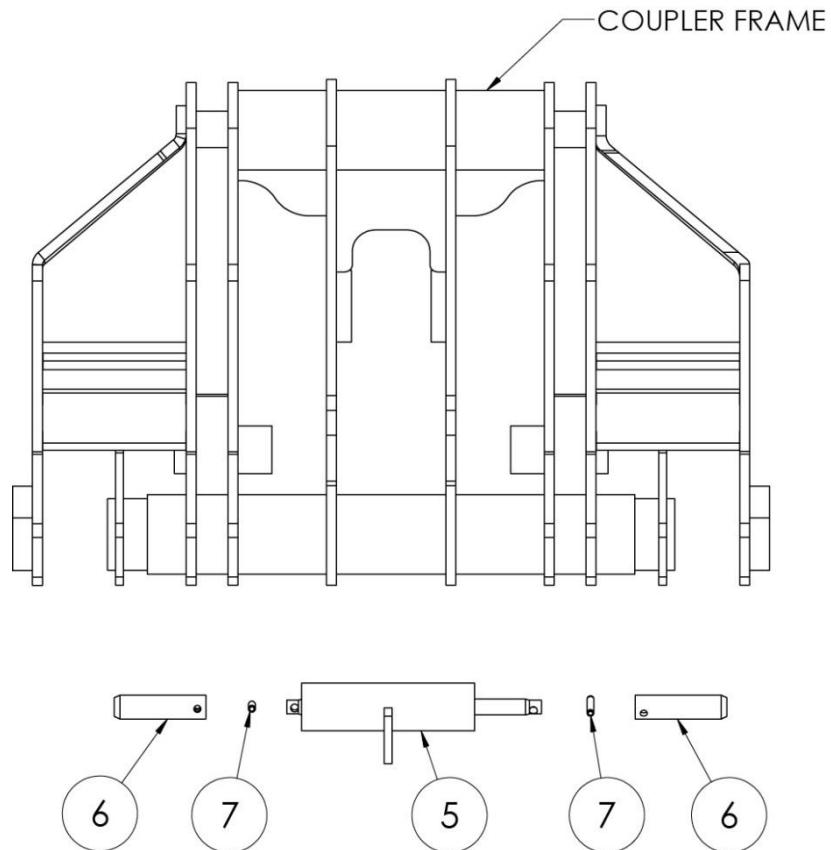
#	# Required	Part Number	Description
20 - 40 Series Rylind Pin-loc Couplers			
1	1	18240	Rylind Double Lock Cylinder
1	1	18265	Rylind Cylinder Seal Kit
2	2	18241	Locking Pins
3	2	GL-SPC-437-1500H	Roll Pins (7/16x1-1/2)
CAT 950-966 Style Couplers Parts List			
1	1	13681	CAT Double Lock Cylinder
1	1	18265	Cylinder Seal Kit
2	2	13661-1	Locking Pins
3	2	GL-SPC-437-1500H	Roll Pins (7/16x1-1/2)



*Picture may not reflect current design or coupler style. Hydraulic lines do not come with new cylinder order.

CAT "IT" Style Parts List

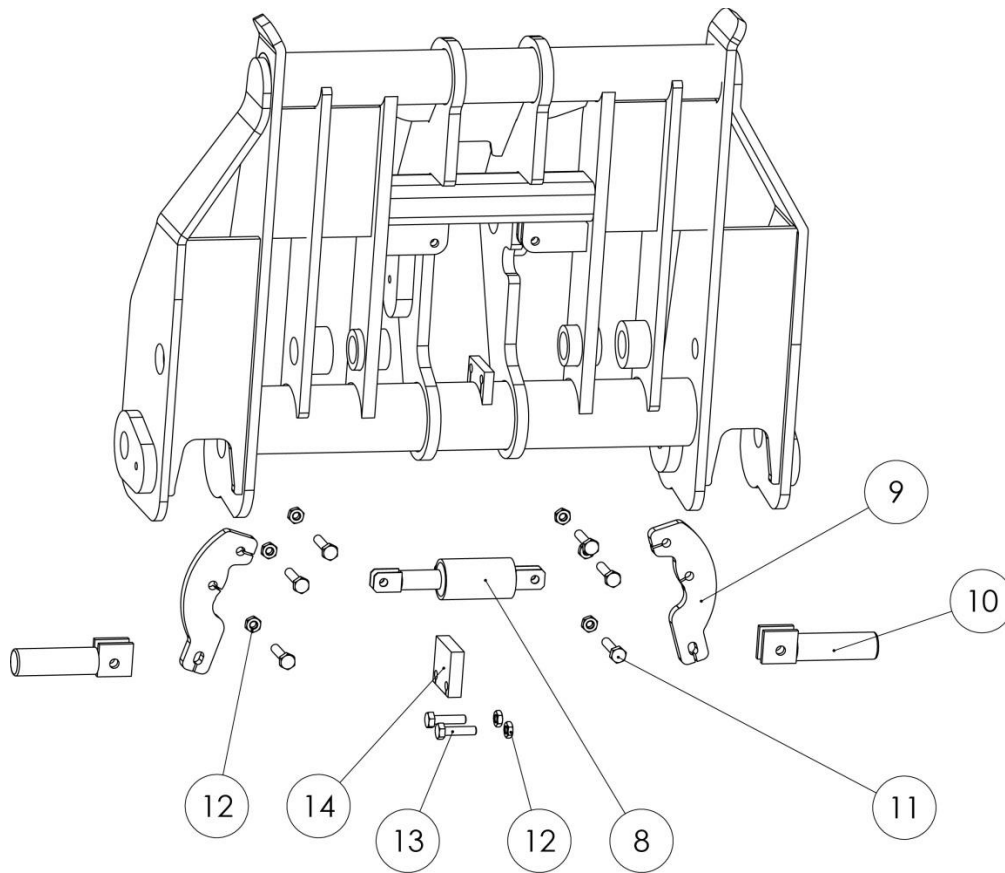
5	1	13681	IT Double Lock Cylinder
5	1	18265	Cylinder Seal Kit
6	2	13682	Locking Pins
7	2	GL-SPC-437-1500H	Roll Pins (7/16x1-1/2)



*Picture may not reflect current coupler design.

Balderson, CAT 938 Style Parts List

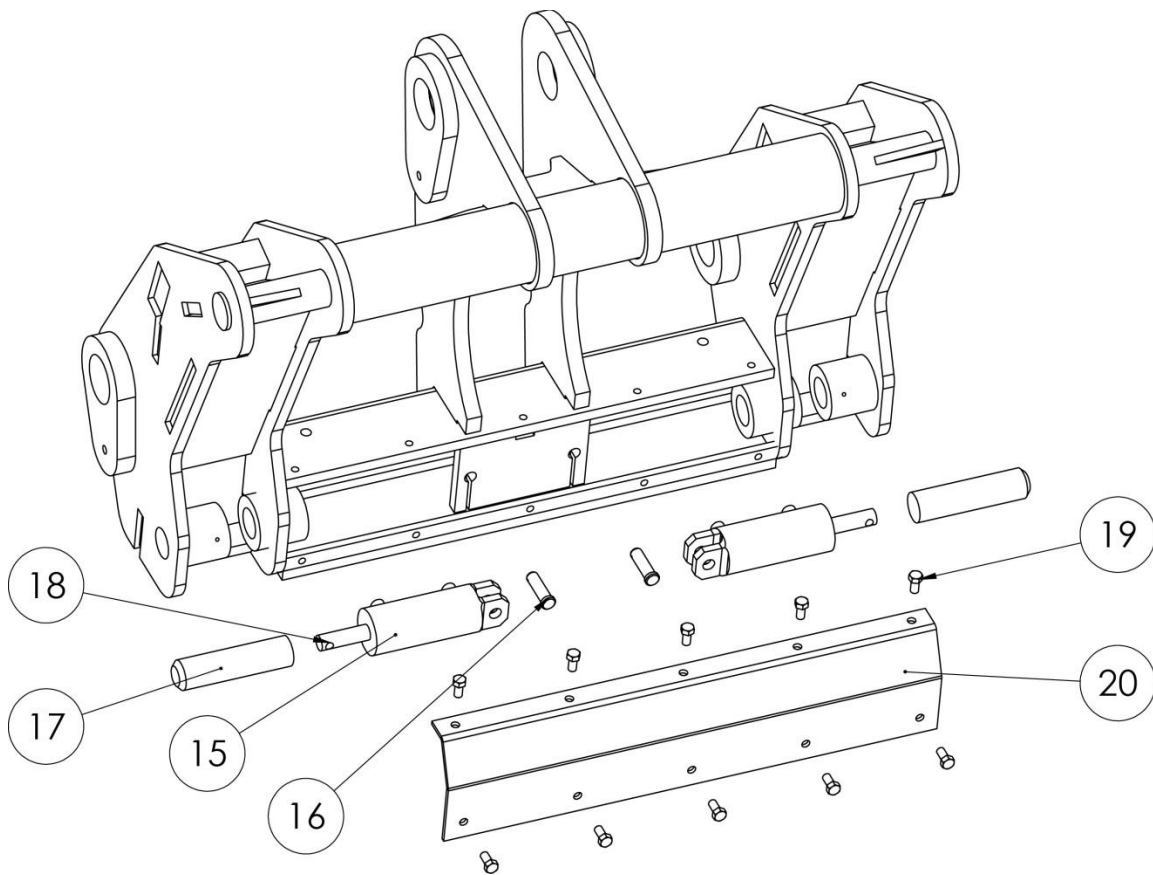
#	# Required	Part Number	Description
8	1	13699	Lever Lock Cylinder
8	1	18265	Cylinder Seal Kit
9	2	13800	Lever Lock Hinge
10	2	18256	Locking Pins
11	6	503030021	5/8-11x3 Hex Head Cap Screw
12	8	2543000021	5/8-11 Hex Head Torque Nut
13	2	503024021	5/8-11x2 Hex Head Cap Screw
14	1	13801	Stop Block



*Picture may not reflect current coupler design.

Volvo ISO & Deere Hi-Vis Coupler Parts List

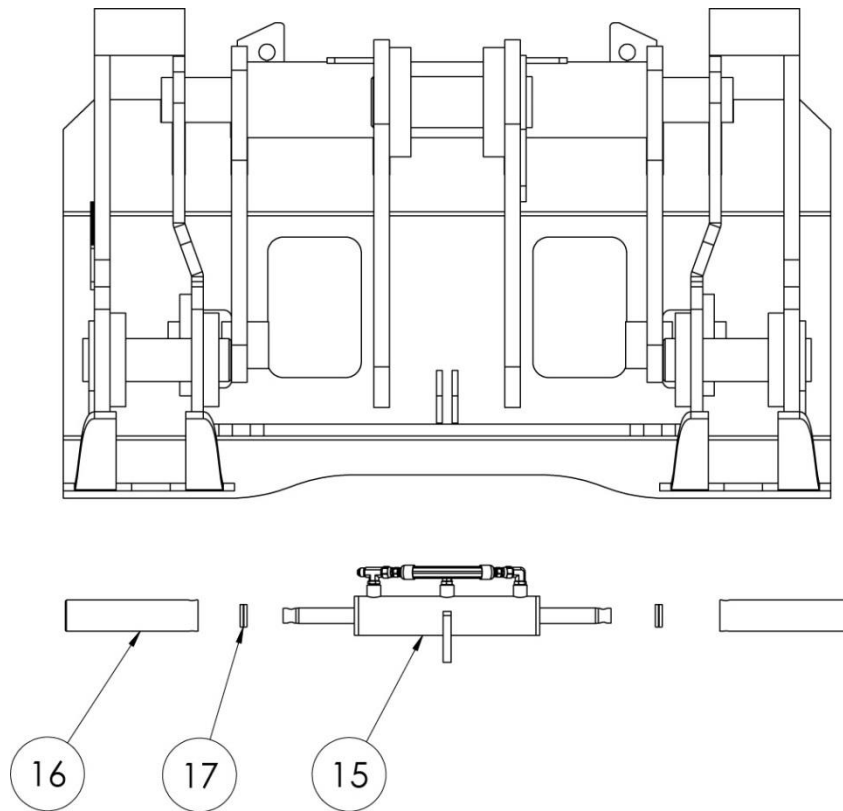
#	# Required	Part Number	Description
15	2	13810	VME Cylinder Complete
15	2	18265	Cylinder Seal Kit
16	2	18231	Cylinder Retaining Pin
17	2	13811	Locking Pins
18	2	18241-1	Locking Pin Roll Pin
19	10	502816021	1/2-13x1 Hex Head Cap Screw
20	1	13817	Cylinder Housing Cover Plate
-	2	GL-SPC-437-1500H	Roll Pins (7/16x1-1/2)



*Picture may not reflect current coupler design.

JRB 416 Coupler Parts List

#	# Required	Part Number	Description
15	1	27962	Hydraulic Locking Cylinder
15	1	27963	Hydraulic Locking Cylinder Seal Kit
16	2	27970	Hydraulic Locking Pin
17	2	GL-SPC-437-1500H	Roll Pins (7/16x1-1/2)





Business Offices
2801 Youngfield Street
Suite 250
Golden, CO 80401-2263

P) 303-979-3548
F) 303-979-4730
www.Rylind.com
Info@rylind.com

LIMITED WARRANTY

Rylind Manufacturing Inc. Is a company related to and having the responsibility for the manufacturing, marketing, and distribution of the product line known by the registered trade name "Rylind"

Rylind Manufacturing, Inc. warrants these products to be free of defects in material and/or workmanship for a period of one (1) year or 2,000 hours from the date of purchase under normal use and service providing that:

- A. All products and related components are installed properly according to instructions and that proper maintenance and greasing of movable parts is completed on a regular basis.
- B. The attachment products and related components are used only for the purpose for which they were intended as designated by the manufacturer and that the rated capacities are not exceeded.
- C. This is a "PARTS ONLY" warranty for defects in hydraulic components not typical maintenance parts (i.e. seal kits, hydraulic hoses, cylinders, or vendor supplied valves). This means the hydraulic part will be replaced freight prepaid from the factory. Travel time or labor to replace the defective component is "NOT" included in this warranty. Return of the defective parts for inspection may be requested.
- D. Hydraulic kits and components are warranted for one (1) year from invoice date. Cylinders must be returned in their entirety and not have been disassembled to be considered for warranty. After warranty replacement parts include cylinders, hydraulic valves, seal kits, electric components, and wear parts are warranted for 90 days from the date of purchase. Disassembly, modification or welding of any kind without the written permission of Rylind Manufacturing voids the warranty on the cylinder and seals. All warranty components must be packaged and sealed to avoid contaminants from entering during shipping. Improperly packaged components will not be considered for warranty. Hydraulic hoses are warranted against failure due to workmanship. Improper installation, ripping, cutting, or wear due to rubbing is not covered under warranty.
- E. Defects in materials and/or workmanship with respect to welding or structural failures will be paid at a rate not to exceed 70% of the advertised charge out rate. Repairs must be authorized by Rylind before work proceeds. Travel time or mileage is "NOT" included. All warranty work to be performed must be authorized by Rylind Manufacturing, Inc. Repair or replacement will be at our discretion. Estimates of the total costs involved must be given to us before proceeding with any work involving a Rylind product. No warranty will apply to products that have been modified or repaired without our authorization. Normal wear and tear will not be considered as

a defect. Accidents, misuse or negligence does not justify warranty. This warranty does not include or cover purchased subassemblies including, but not limited to, teeth, fork tines, cylinders, wear plates, edges, etc... Such purchased subassemblies are covered only by the OEM's warranty, if any, of their respective manufacturer, and not Rybind Manufacturing.

F. Limitations

- a. This limited warranty does not cover product, which in the opinion of Rybind, is damaged due to abuse, misuse, misapplication, prohibited operation, improper maintenance, alteration, unauthorized service, contamination by the base machine, or normal wear and tear. This warranty is null and void if the product is modified in any way without the written consent or instruction of Rybind.
 - b. This limited warranty is null and void if the product is used in a prohibited operation, or unauthorized adjustment/assembly/disassembly has occurred.
 - c. Dealers or Agents of Rybind have no authority to make any type of representation or warranties on behalf of Rybind Manufacturing beyond those expressly set forth in this document.
 - d. This warranty is in lieu of and excluding all other warranties preceding it including and without limitation to any implied warranties of merchantability or fitness for a particular purpose.
- G. In no event shall Rybind be liable to any party, including but not limited to buyer for any direct, incidental, consequential, punitive, or special damages, including but not limited to loss of profits, loss of productivity, in any way related to or arising, directly or indirectly from the product. The liability of Rybind for any and all losses and damage to buyer, its successors and assigns, resulting from any cause whatsoever, including the negligence of Rybind, irrespective of whether such defects are discoverable or latent, shall in no event exceed the purchase price of the product with respect to which such losses or damages are claimed.
- H. All returned products must be shipped to the following address to avoid any delay or expense in the warranty process:

Rybind Manufacturing, Inc.
Warranty/Service Department
16178 Front Ave
Atwood, CO 80722